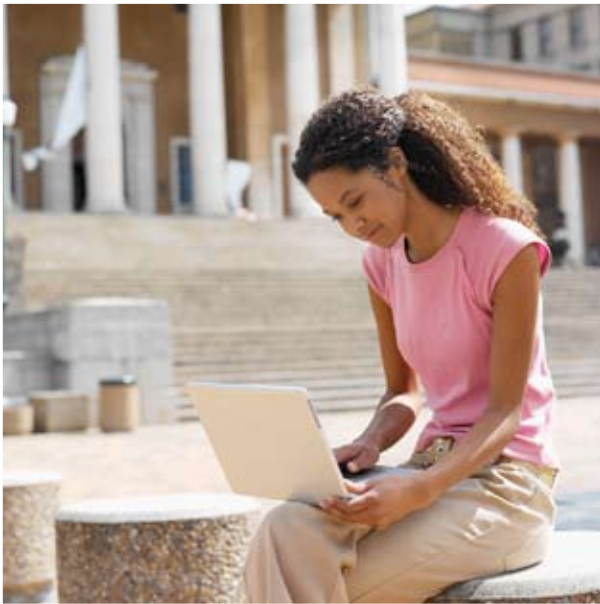


## NetCardManager™



Online deposit screen\*

## For Colleges and Universities

### Overview

NetCardManager™ is an online solution from CBORD® designed to ease the workload of card office personnel by making administrative processes available via the web. The offering is hosted by CBORD, and is available to users of CBORD's CS Gold® and Odyssey PCS™ card systems.

NetCardManager functions similarly to ManageMyID™, another online account management offering from CBORD. Both platforms improve operations with online functionality, empowering students to

**View balance inquiries:** Students may display account balances in real time. Students may be allowed to view all of their accounts, or the university may choose to restrict access to some.

**Check transaction histories:** Transaction histories may be displayed for up to the past six months. Information displayed for each transaction shown includes date/time, location, account, type of transaction, and amount of transaction. Students choose which transactions they wish to view by selecting a calendar month from a list.

**Report cards lost or stolen:** No more waiting for the card office to open to deactivate lost or stolen cards! This optional feature lets students simply go online to submit a lost card report, immediately removing all access and spending privileges from the card. They will then be instructed on what their next steps should be to obtain a new card (e.g., "Visit the card office on the first floor of McHenry Hall weekdays between 9:00 a.m. and 5:00 p.m.").

**Make online deposits:** Students or guests (e.g., parents) may deposit money to campus card accounts via credit card from the convenience of their own computers. This optional feature brings with it an additional charge. NetCardManager supports convenience fees, which are customizable by institution.

## Features

- View balance inquiries
- Check transaction histories
- Report cards lost or stolen (optional)
- Make deposits to campus card accounts (optional)

\*Actual screens may vary based on institution and card system.

# NetCardManager™

There are also several major distinctions between NetCardManager and ManageMyID. The main differences are as follows:

**Graphical customization:** NetCardManager features enhanced graphical customization opportunities, including color schemes and multiple graphical fields. This flexibility makes it easy for NetCardManager to fall in line with each university's existing graphical identity.

**Single sign-on:** NetCardManager supports single sign-on, meaning once a user is logged into the university website containing NetCardManager, he or she won't need to log in again to access NetCardManager.

**Ad-free:** NetCardManager does not feature any advertising.



Transaction history screen\*



Balance inquiry screen\*

2

CBORD and CS Gold are registered trademarks, and NetCardManager, ManageMyID, and Odyssey PCS are trademarks, of The CBORD Group, Inc.

